



CBSE NCERT Based Chapter wise Questions (2025-2026)

Class-XII

Subject: Biology

Chapter Name : Human Health & Diseases (Chap : 7)

Total : 9 Marks (expected) [MCQ(2)-2 Mark, AR(1)-1, SA(1)-2, CBQ(1)-4 Marks]

Level - 1

MCQ Type :

1. HIV, that causes AIDS, first starts destroying
- | | |
|--------------------------|-------------------|
| (A) helper T-lymphocytes | (B) B-lymphocytes |
| (C) leucocytes | (D) thrombocytes |

Hint : Mode of action of HIV

2. Antibodies in our body are complex
- | | | | |
|-------------------|------------------|--------------|--------------------|
| (A) glycoproteins | (B) lipoproteins | (C) steroids | (D) prostaglandins |
|-------------------|------------------|--------------|--------------------|
3. Lysosome, present in saliva, perspiration and sweat, destroys-
- | | |
|-------------------------------|-------------------|
| (A) certain types of bacteria | (B) all viruses |
| (C) most virus-infected cells | (D) certain fungi |

Hint : Innate immunity

4. Increased asthmatic attacks in certain seasons are related to
- | |
|---|
| (A) eating fruits preserved in tin containers |
| (B) inhalation of seasonal pollen |
| (C) low temperature |
| (D) hot and humid weather |

Hint : Allergies

5. The clinical test used to detect typhoid is
- | | | | |
|-----------|---------|---------|-----------|
| (A) ELISA | (B) ESR | (C) PCR | (D) Widal |
|-----------|---------|---------|-----------|
6. The organisms which cause diseases in plants and animals are called
- | | | | |
|---------------|-------------|-------------|---------------|
| (A) Pathogens | (B) Vectors | (C) Insects | (D) Helminths |
|---------------|-------------|-------------|---------------|
7. 'Smack' is a drug obtained from
- | |
|--|
| (A) latex of <i>Papaver somniferum</i> |
| (B) leaves of <i>Cannabis sativa</i> |
| (C) flowers of <i>Datura</i> |
| (D) fruits of <i>Erythroxyl coca</i> |

Hint : drug abuse

8. Antibodies in colostrum for protection of new born is -
- | | | | |
|---------|---------|---------|---------|
| (A) IgG | (B) IgA | (C) IgD | (D) IgE |
|---------|---------|---------|---------|

Hint : Innate immunity

9. Which of the following is not a lymphoid tissue ?
- | | | | |
|------------|-------------|--------------|------------|
| (A) Spleen | (B) Tonsils | (C) Appendix | (D) Thymus |
|------------|-------------|--------------|------------|
10. The substance produced by a cell in viral infection, that can protect other cells from further infection is
- | | | | |
|---------------|---------------|----------------|---------------|
| (A) Serotonin | (B) Colostrum | (C) Interferon | (D) Histamine |
|---------------|---------------|----------------|---------------|

Assertion and Reason:

Directions: Read the following questions and choose any one of the following four responses.

- A: Assertion and Reason both are correct and Reason is the correct explanation of Assertion.
- B: Assertion and Reason both are correct and Reason is not the correct explanation of Assertion.
- C: Assertion is correct but Reason is wrong.
- D: Assertion is wrong but Reason is correct.

11. Assertion (A): Tapeworm, roundworm and pinworm are endoparasites of human intestine.

Reason (R): Improperly cooked food is the source of intestinal infections.

- ☐ A ☐ B ☐ C ☐ D

Hint : Helminthic diseases and their causes

12. Assertion (A): Second infection of the same pathogen is quickly eliminated.

Reason (R): Preformed memory of B and T-cells elicit a quick and vigorous attack on pathogens.

- ☐ A ☐ B ☐ C ☐ D

Hint : Active immunity

13. Assertion (A): Morphine is used for patients under depression

Reason (R): Morphine is a very effective sedative painkiller.

- ☐ A ☐ B ☐ C ☐ D

Hint : Effects of morphine as a drug

14. Assertion (A): Tobacco contains nicotine which stimulates the adrenal gland.

Reason (R): Nicotine increases blood pressure and heart rate.

- ☐ A ☐ B ☐ C ☐ D

Hint : Tobacco consumption

15. Assertion (A): Opioids help to enhance respiratory activity.

Reason (R): Opioids bind to the receptors in the CNS and gastrointestinal tract.

- ☐ A ☐ B ☐ C ☐ D

Hint : Consumption of opioids.

Short Answer Questions :

16. Define the term health. Mention any two ways of maintaining it.

Hint : Introduction to 'Health'.

17. List the symptoms of ascariasis. How does a healthy person acquire this infection?

Hint : Mode of transmission of *Ascaris*.

18. Name the causative organism of amoebiasis. List 2 symptoms of the disease.

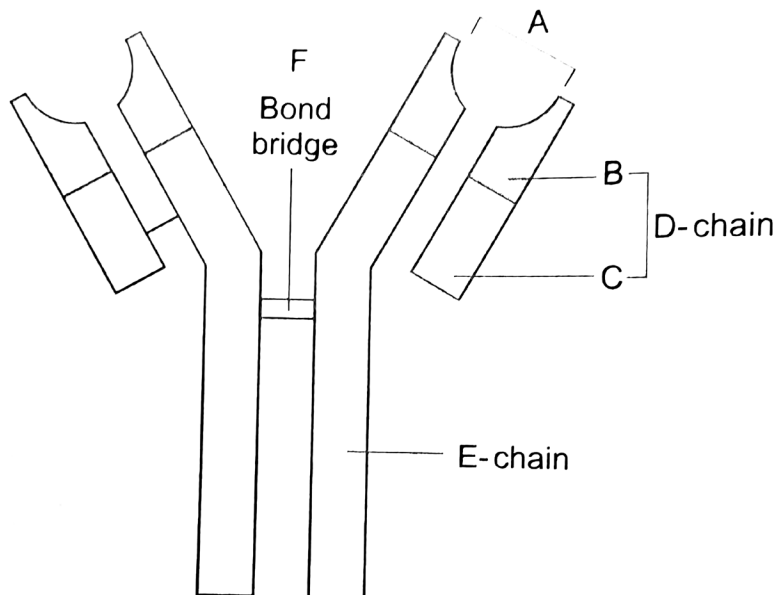
19. Write the biological names of the causal organisms of the following diseases.

- a) Typhoid b) Pneumonia c) Elephantiasis d) Amoebiasis

20. List the two types of immunity a human baby is born with. Explain the differences between the two types of immunity.

Hint : Natural and acquired immunity.

21. Identify A, D, E and F in the diagram of the antibody given below.



22. Name the plant source of the drug popularly called 'smack'. How does it affect the body of the abuser ?

Hint : Poppy

23. From which plant are cannabinoids obtained ? Name any two cannabinoids. Which part of the body is affected by consuming these substances ?

Long Answer Questions :

24. Name any two organisms that are responsible for ringworms in humans. Mention 2 diagnostic symptoms. Name the specific parts of the human body where these organisms thrive. Explain why ?

Hint : See under fungal infections of skin.

25. Trace the life cycle of malarial parasite in the human body when bitten by an infected female *Anopheles*.

Hint : Draw schematic diagram of the infection.

26. Explain the role of the following in providing defence against infections.

- a) Histamines b) Interferons c) B-cells.

27. a) Explain 'contact inhibition' and 'metastasis' with respect to cancer.

- b) Name the group of genes which have been identified in normal cells that could lead to cancer and how do they do so ?
c) Why are cancer patients given α -interferon for treatment?

Hint : Properties of cancer cells ; protooncogenes.

28. a) Name and explain any 4 lymphoid organs present in humans.

- b) Categorise the lymphoid organs as primary and secondary, giving reasons.

Hint : Thymus and lymph nodes.

Case Based Questions.

29. Read the given passage and answer the following questions :

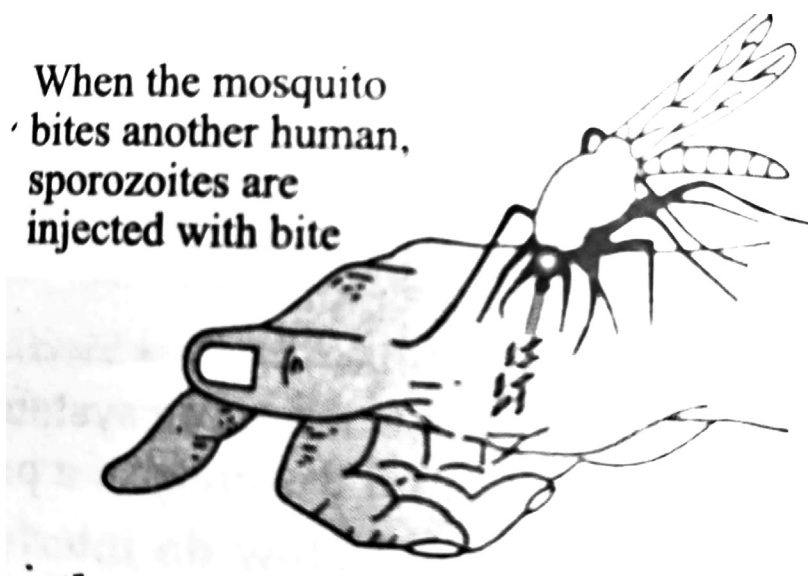
The immune system of a person is suppressed. In the ELISA test, he was found positive to a pathogen.

- a) Name the disease the person is suffering from. –
b) Name the causative organism.

c) Which cells of the body are affected by the pathogen ? How does the infection spread?

Hint : AIDS.

30. Given diagram shows the infection in human from sporozoites of malarial parasite from a mosquito bite.



- Name the causal organism.
- Trace the path of sporozoites after entering into the human body.
- By which method does the parasite multiply inside the human body?

Hint : Infection in malaria.

31. The immediate adverse effects of drugs and alcohol abuse are manifested in the form of reckless behaviour, vandalism and violence. Excessive doses can lead to coma and death. A combination of drugs with alcohol generally results in overdosing and death.
- From where is morphine extracted?
 - What is the full form of LSD? Why is it taken?
 - State two reasons for taking drugs and alcohol by young people.

Hint : drug addiction

32. Prior to a sports event, blood and wine samples of the athletes are collected for drug tests.
- Why is there a need to conduct such tests?
 - Name the drugs the authorities usually look for ?
 - Write the generic names of two plants from which these drugs are obtained.

ANSWER

- | | |
|--------|---------|
| 1. (A) | 9. (C) |
| 2. (A) | 10. (C) |
| 3. (A) | 11. (B) |
| 4. (B) | 12. (A) |
| 5. (D) | 13. (D) |
| 6. (A) | 14. (B) |
| 7. (A) | 15. (D) |
| 8. (B) | |